



20 Shiraz Drive Bonnell's Bay NSW

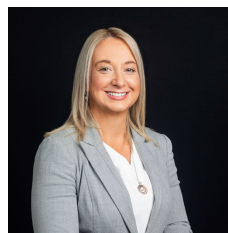
4 🏠 2 🚗 2 🚗

Featuring a brilliant floor plan with multiple living areas and a spacious kitchen which is beautifully complimented by a huge covered alfresco area overlooking your pool, perfect for social gatherings with family and friends.

Price : \$969,000
Land Size : 690.7 sqm
View : <https://www.lawsonre.com.au/7978705>

Highlights include;

- * Fantastic covered entertainment area, ideal for entertaining friends and family
- * Enjoy the large in ground pool, perfect way to relax after a hot summers day
- * Spacious open plan kitchen, large family room and rumpus room
- * Separate formal lounge room and formal dining room.
- * Fully fenced and landscaped yard with low-maintenance gardens

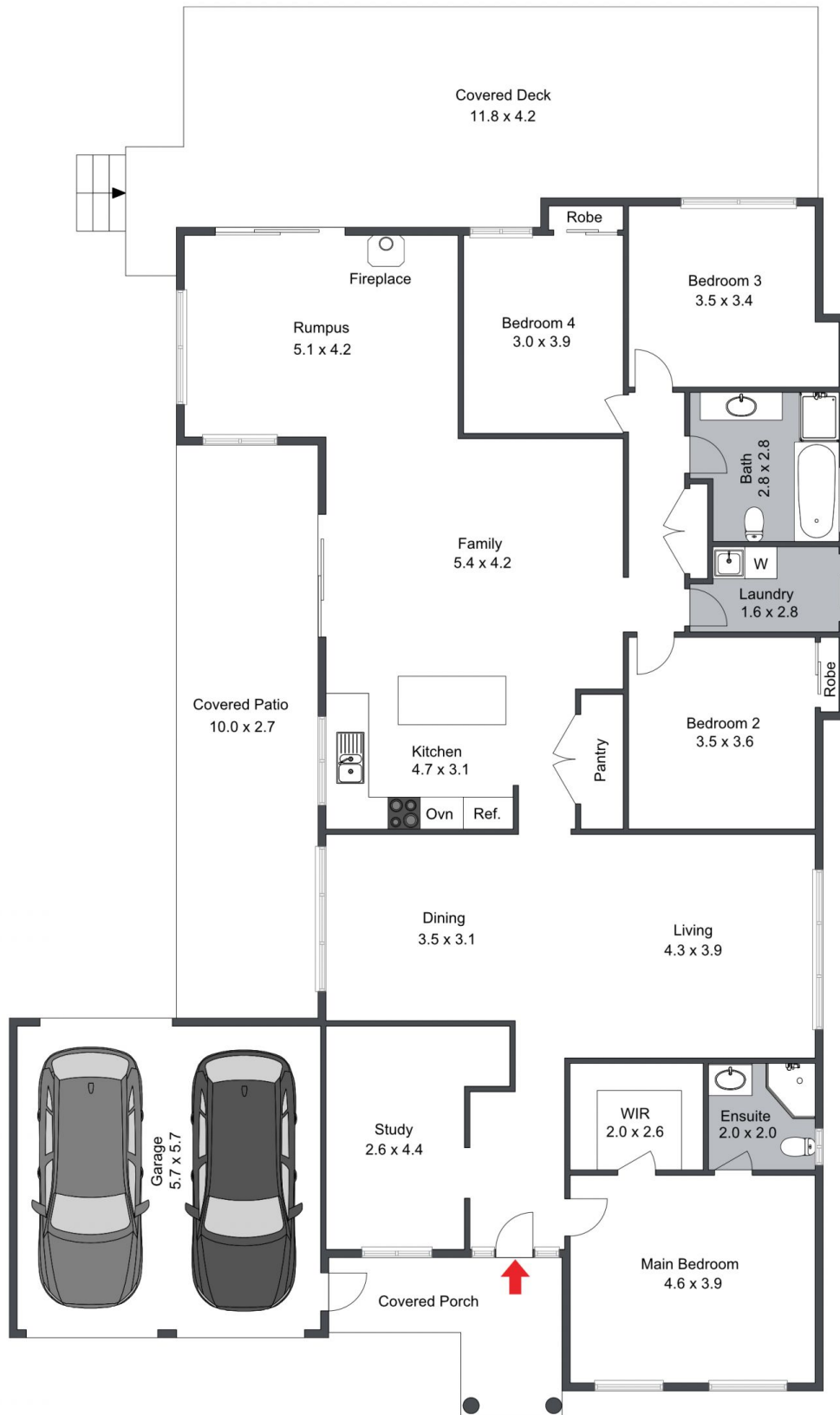


Kerrie Wright
02 4973 3111



Mitchell Petty
02 4973 3111

Ideally located within walking distance to the local shopping centre and a very short drive to Pendlebury Park and numerous boat ramps within the brilliant lakeside suburb of Bonnell's Bay. Don't miss out on the opportunity to own this fantastic property. Make your next move with Kerrie and the team at Lawson Real Estate.



20 Shiraz Drive, Bonnells Bay

The floor plan is not to scale; measurements are indicative and in metres. Exterior elements are not in position. Plans should not be relied on. Interested parties should make and rely on their own enquiries.



20 Shiraz Drive, Bonnells Bay

The floor plan is not to scale; measurements are indicative and in metres. All features included in this 3D plan are for inspiration purposes only. This is not an exact replica of the property or the position of exterior elements. Plans should not be relied on. Interested parties should make and rely on their own enquiries.