

LAWSON.



50 Rosemary Row Rathmines NSW

3 2 4

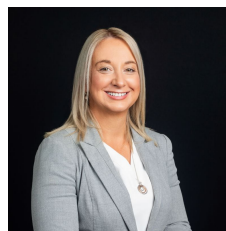
Set on an expansive block of over 1,000 sqm, this three-bedroom home offers incredible potential for families looking to create their dream lifestyle. With its family-friendly layout, fantastic outdoor features, and unbeatable location near Lake Macquarie, this property is perfect for growing families with an active lifestyle.

The outdoor area is a standout, with a large undercover alfresco space leading to an expansive inground pool - ideal for summer entertaining. A double carport with drive-through access provides entry to a large shed, perfect for additional storage or workspace with the bathroom facilities.

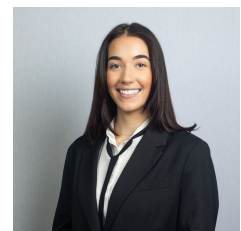
Highlights include:

- * Three generous bedrooms all with built-in wardrobes
- * Spacious main bathroom with second, separate toilet

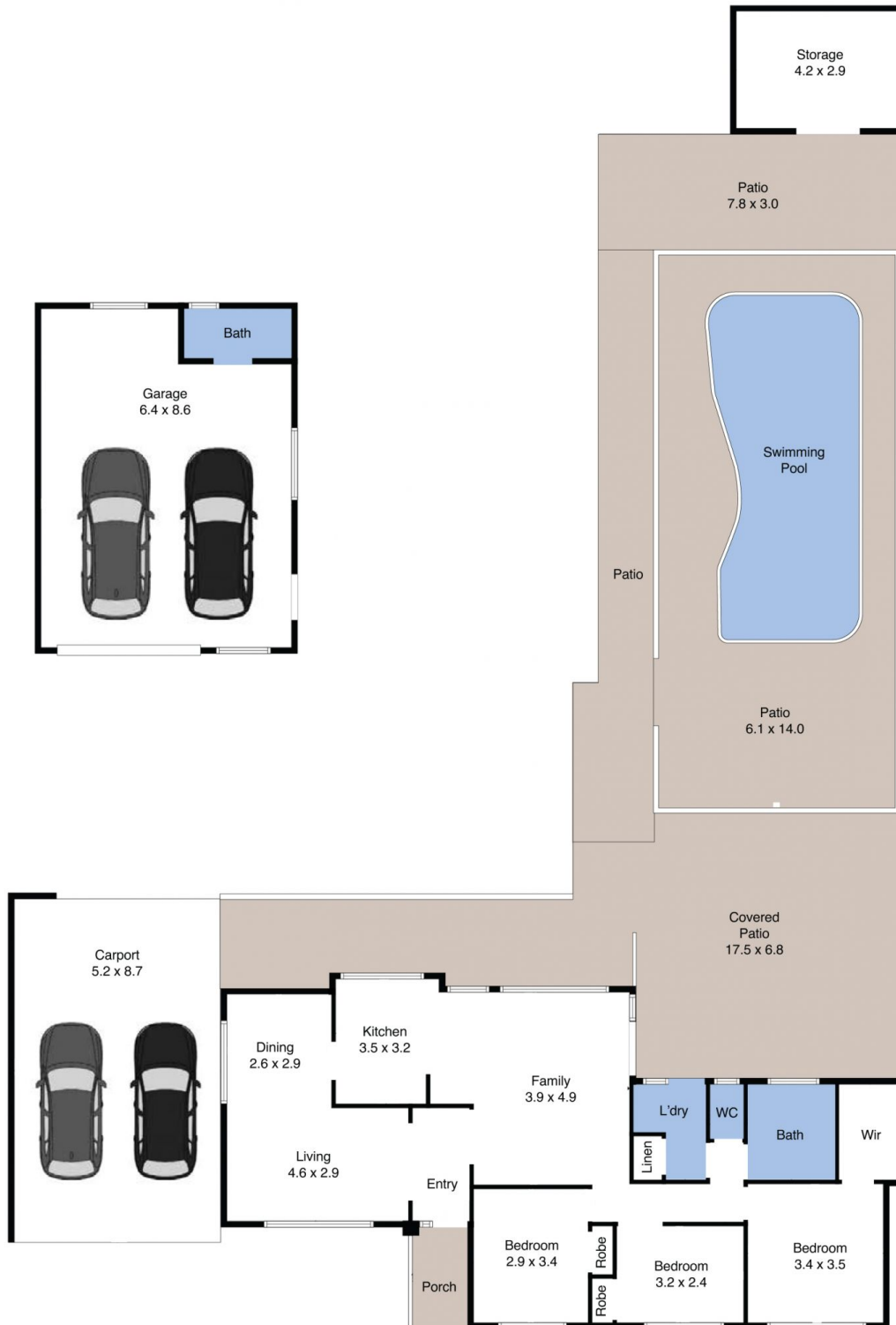
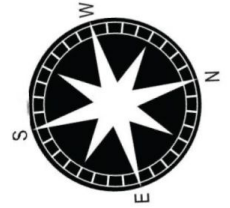
Price : Guide: \$945,000
Land Size : 1113 sqm
View : <https://www.lawsonre.com.au/8219000>



Kerrie Wright
02 4973 3111



Maggie Hutchin
02 4973 3111



50 Rosemary Row, Rathmines

The floor plan is not to scale; measurements are indicative and in metres. Exterior elements are not in position. Plans should not be relied on. Interested parties should make and rely on their own enquiries.

Produced by **DIAKRIT**