

# LAWSON.



7a Brushbox Road COORANBONG NSW

3  2  2 

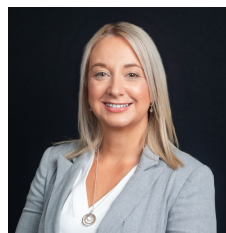
Modern living located moments to Avondale Shopping Village, local cafes, excellent primary and high schools, Avondale College as well as the beautiful Watagan National Park. This sleek modern design is complimented by the neutral colour palette and quality fixtures throughout.

**Price** : \$ 687,500  
**Land Size** : 303 sqm  
**View** : <https://www.lawsonre.com.au/8366038>

Highlights include;

- \* Light filled open plan kitchen, dining and living area
- \* Walk-in robe and en-suite in the master bedroom
- \* Remote double garage with direct internal access
- \* Easy maintenance living

Beautifully presented interior, relaxed indoor outdoor living and a central location all combine to make this appealing home a fantastic choice first home buyers or downsizers that are not quite ready for retirement living. Make your next move with Kerrie from PRD and book an inspection



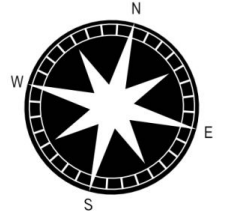
**Kerrie Wright**  
02 4973 3111



**Ben Lawson**  
0412 552 024

<https://www.lawsonre.com.au>  
Ph. 02 4973 3111

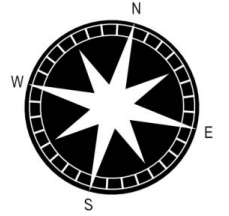
11/43 Accolade Ave, Morisset  
02 4973 3111



## 7A Brushbox Road, Cooranbong

The floor plan is not to scale; measurements are indicative and in metres. All features included in this 3D plan are for inspiration purposes only. This is not an exact replica of the property or the position of exterior elements. Plans should not be relied on. Interested parties should make and rely on their own enquiries.

Produced by **DIAKRIT**



## 7A Brushbox Road, Cooranbong

The floor plan is not to scale; measurements are indicative and in metres. Exterior elements are not in position. Plans should not be relied on. Interested parties should make and rely on their own enquiries.

Produced by **DIAKRIT**