

# LAWSON.



## 63 Mountain Ash Drive COORANBONG NSW

4  2  2 

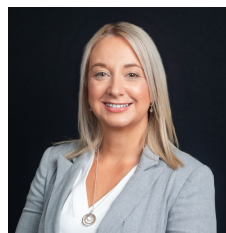
This immaculate brand-new home showcases a spacious single level layout with stylish, high-quality inclusions throughout. This quality build by McDonald Jones Homes will be one you won't want to leave.

Situated in a sought-after location in Cooranbong, conveniently close the local shops and schools including the highly desirable Avondale University. Enjoy the tranquility of the surrounding Watagan Mountains, the beautiful shores of Lake Macquarie, or take a short drive and enjoy the local cafes and restaurants.

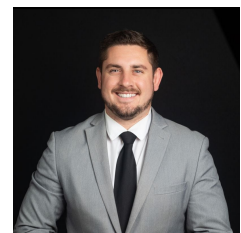
As you step inside, you will be greeted by a warm and inviting atmosphere. The open floor plan seamlessly connects the living, dining and kitchen areas, creating the perfect space for entertaining guests or spending quality time with your loved ones.

This stunning property comes with a spacious backyard presenting endless possibilities for outdoor activities,

**Price** : \$ 935,000  
**Land Size** : 770.2 sqm  
**View** : <https://www.lawsonre.com.au/8366071>



**Kerrie Wright**  
02 4973 3111



**Mitchell Petty**  
0249733111