

LAWSON.



7 Stan Crescent BONNELLS BAY NSW

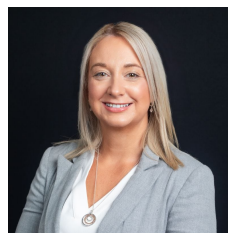
4 2 2

From the moment you step inside, you will appreciate the seamless blend of style and space in this immaculately presented Coral Home. Designed with the modern family and the sophisticated entertainer in mind, this residence offers a rare combination of luxury and low-maintenance lakeside living. The heart of the home is a master chef's dream kitchen, boasting premium Caesarstone benchtops, a large walk-in pantry, and ample bench space. The open-plan living and dining areas flow effortlessly to the outdoors, creating a year-round sanctuary for alfresco dining while keeping an eye on the kids in the expansive, family-friendly backyard.

Highlights Include:

- * A spacious master suite featuring a modern ensuite and a generous walk-in robe.
- * An oversized outdoor area combining a covered tiled

Price : Guide: \$1,100,000 to \$1,150,000
Land Size : 932.8 sqm
View : <https://www.lawsonre.com.au/8683605>



Kerrie Wright
02 4973 3111

Internal 224m² External 709m² Land Size 933m²

7 Stan Crescent, **Bonnells Bay**



4 x 2 x 2 x

NORTH



NOTE: Every precaution has been taken to verify the accuracy of the above details. However, prospective purchasers are advised to make their own enquiries.