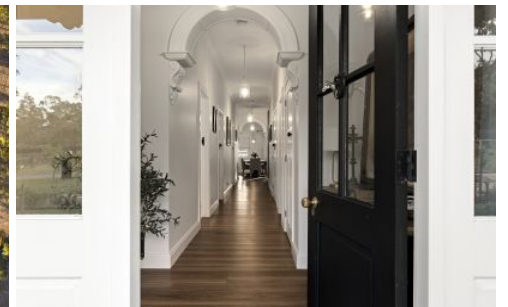


LAWSON.



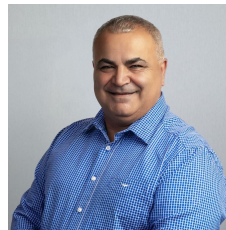
87 Church Street ABERMAIN NSW

4 2 6

Positioned on a sprawling 2,002sqm corner block in a peaceful estate, this near-new residence has been meticulously designed with an eye for detail. From the sweeping wrap-around verandah to the intricate ceiling medallions and stunning archway moldings, every corner of this home exudes a sophisticated country-style warmth. Whether you are hosting friends in the designer kitchen, relaxing by the fire, or making use of the expansive workshop facilities, this is a home where every detail has been considered for the modern family.

- * Federation-inspired, country design with high ceilings, ceiling medallions and decorative archways.
- * Gourmet kitchen with breakfast bar, farmhouse sink, woodfire stove and gas cooking and butlers pantry.
- * Large, private master suite with walk-in robe and ensuite.
- * Remaining 3 bedrooms with built-ins and French-doors to

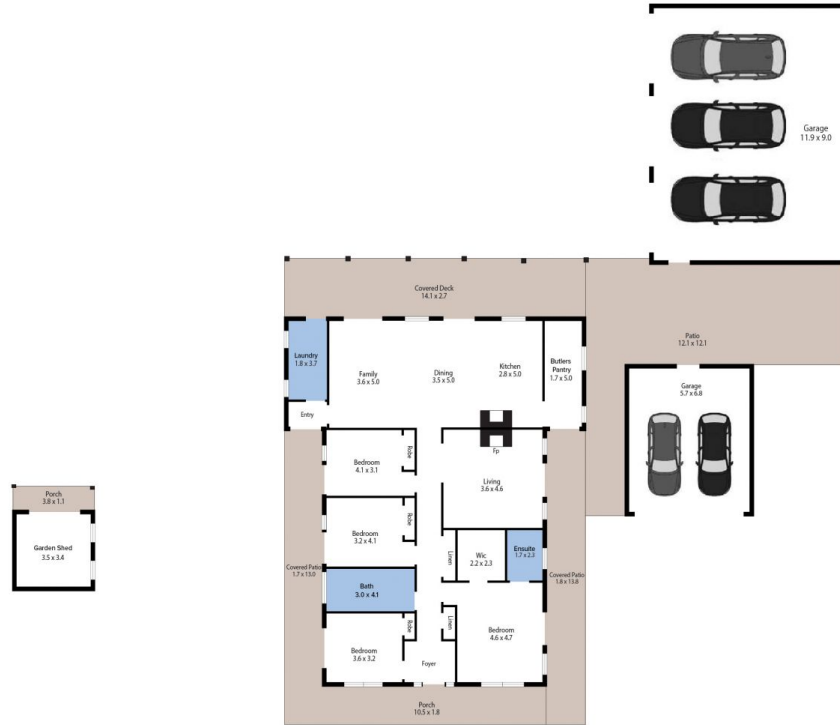
Price : Auction
Land Size : 2002 sqm
View : <https://www.lawsonre.com.au/8698403>



Clayton Khamu
0499 271 238



Maggie Hutchin
02 4973 3111



Disclaimer: All areas, dimensions and boundaries shown are approximate and for illustrative purposes only. Buyers should conduct their own due diligence prior to purchase.