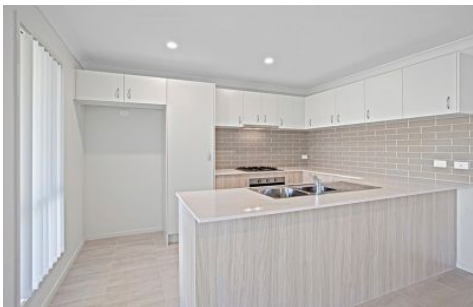


LAWSON.



22 Mountain Ash Drive COORANBONG NSW

5 3 3

We didn't even need a "For Sale" sign.

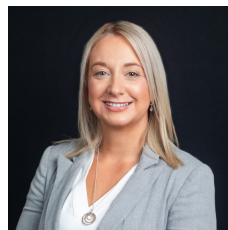
By leveraging our exclusive investor network, we successfully matched 22 Mountain Ash Drive with a savvy buyer and locked in a premium result without the property ever hitting the public market. The demand for quality assets in Cooranbong is currently outpacing supply. Our database is overflowing with qualified investors ready to purchase similar properties right now.

If you are thinking of selling give us a call! on 02 4973 3111

Disclaimer: All sizes are approximate. Refer to sales contract for full details. We have obtained all information provided here from sources we believe to be reliable; however, we cannot guarantee its accuracy. Prospective tenants and purchasers are advised to carry out their own

Price : \$ 1,100,000

View : <https://www.lawsonre.com.au/8700417>



Kerrie Wright
02 4973 3111