



44 Bulwer Street MAITLAND NSW

3 

Elevated Office Space with Unbeatable Exposure

Position your business at the center of the action. Occupying a commanding position at the intersection of Ken Tubman Drive and Bulwer Street, this 283sqm* upstairs tenancy offers the perfect blend of high-profile visibility and functional design.

Whether you are a growing professional firm, an educational provider, or a consulting group, this space provides the "wow factor" and the practical amenities your team needs to thrive.

The Highlights

- * Prime Visibility: Unmissable signage potential to one of Maitland's busiest intersections.
- * Natural Light & Fresh Air: North-facing windows and a

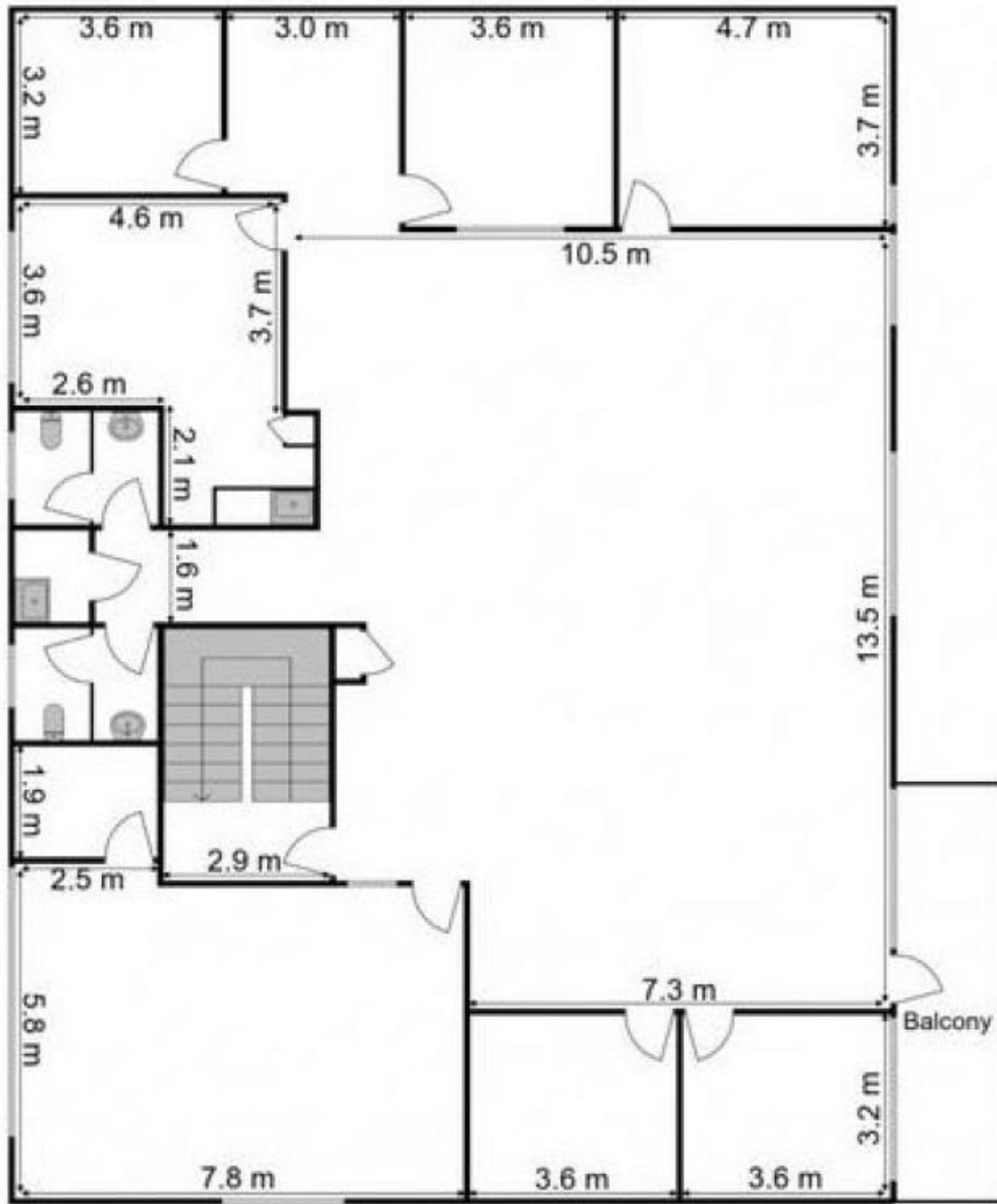
Price : Contact Agent
Building Size : 283 sqm
Land Size : 283 sqm
View : <https://www.lawsonre.com.au/8703695>



Emily Clark
02 4973 3111



Ben Lawson
0412 552 024



Upper Level